



Ref: M2316 MIRANDA - Exclusive duplex apartment with sea views in Calella de Palafrugell

CALELLA DE PALAFRUGELL

648.000 €

DESCRIPTION

Exclusive duplex apartment with sea views in Calella de Palafrugell (Costa Brava), 15 minutes walk from Golfet beach, community pool, 25-meter closed garage. It has a Tourist License. Recently completely renovated apartment, on the second floor with easy access. It has two double rooms with sea views and one single with garden views, two bathrooms with showers as well as a guest toilet. Apartment facing East, so thanks to its good orientation and large windows, spectacular views of the sea from the living room, double bedroom terraces and lots of light throughout the house throughout the day. From the same living room and dining room, you access a large 13m2 terrace with sea views. The apartment has all the comforts: Air conditioning with heat pump in the double rooms, fireplace in the living room, heating with low consumption electric radiators throughout the house, electric awnings on the two terraces, double glazed windows, fully furnished kitchen and equipped. The apartment also has a 25-meter closed garage with cabinets and shelves, and water connection.

General

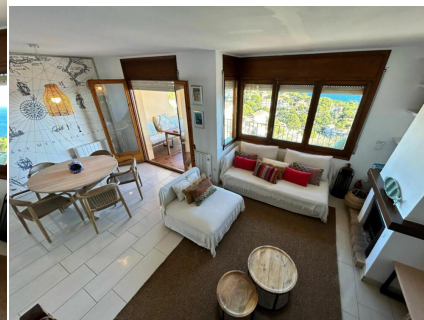
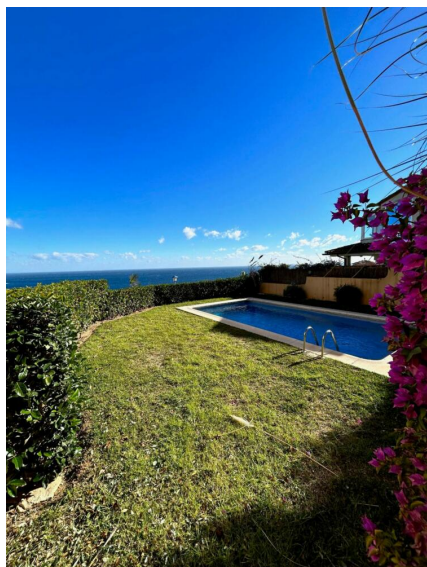
Type of Property: **Penthouse** m2: **104**
m2 plot: **0** Distance from the beach:
Year of construction: Type of pool: **Community**
Views:

Characteristics

Number of rooms: 3	Toilets: 0	Bathrooms with bathtub: 3
Bathrooms with shower: 0	Double beds: 0	Single beds: 0
Bunk beds: 0	Cribs: 0	Sofa beds: 0
Type of kitchen:		

Other Features

Garage



■ CORREDOR MATÓ ■

REAL ESTATE & PROPERTY MANAGEMENT
IMMOBILIÀRIA & ADMINISTRACIÓ DE FINQUES

